



Surf Bay  
HOLIDAYS

Own  
your  
own

Holiday  
breaks

Book a  
**Surf Bay Holiday**  
for the perfect  
get-away



Stay at our award winning holiday parks  
in Devon and Cornwall

Lodge and caravan holiday homes

Luxury apartments

Holiday cottages

Hot tubs

Pet friendly accommodation

[www.surfbayholidays.co.uk](http://www.surfbayholidays.co.uk)

Welcome to

# Surf Bay HOLIDAYS

Surf Bay Holidays is a family run business, operating four exceptional, award winning holiday parks located along the stunning Devon coastline and the breathtaking countryside of Cornwall.

Families and couples can retreat to self-catering holidays and short breaks in holiday caravans, apartments, pods or lodges when choosing Surf Bay Holidays.

There's no need to leave your four legged friend behind either as we also offer dog friendly accommodation.

You'll be spoilt for choice of days out at all four of our parks, with their idyllic locations making them perfect for relaxed breaks as well as activity filled adventures.

No matter what your idea of the perfect holiday is, you can book with confidence when you stay at one of our parks, safe in the knowledge that you've found your ideal destination.

We look forward to seeing you.

**Michael Taylor**  
Managing Director



2 Book a Surf Bay Holiday, for the perfect get-away

## Our Park Locations



## Holiday Home Ownership

If you fancy joining us on a more regular basis, three of our parks provide superb opportunities for holiday home ownership meaning you're free to escape from it all at the drop of a hat!



## Enjoy the great outdoors

You'll find plenty to do when you stay at any of our holiday parks, whether you want to explore the North Coast of Devon, or the beautiful Cornish countryside.



## Fantastic surfing

The west-facing coast of Devon and Cornwall is extremely popular with surfers. Our Devon parks are perfectly situated on the North Coast, with plenty of surf schools available for beginners.



## Dogs welcome

We have pet friendly accommodation in selected caravan holiday homes, lodges and apartments, so your dogs can enjoy exploring too.

With seaside towns, rural villages, fantastic scenery, fabulous surfing beaches and outstanding food and drink,  there really is something for everyone in Devon and Cornwall.

# Contents

OUR DEVON PARKS..... 4 - 19

**Beachside Holiday Park**..... 6

Accommodation ..... 7 - 9

Luxury apartments ..... 10 - 11

Facilities ..... 16

Local dining ..... 17

Local activities ..... 18 - 19

**Surf Bay Holiday Park**..... 12

Own your own holiday home ..... 13

Luxury apartments ..... 14 - 15

Facilities ..... 16

Local dining ..... 17

Local activities ..... 18 - 19

OUR CORNWALL PARKS.....20 - 21

**River Valley Country Park**..... 22

Accommodation ..... 23 - 24

Own your own holiday home ..... 25

Luxury retreat .....26 - 27

Facilities ..... 28

Local dining ..... 29

Local activities ..... 32 - 33

**Silverbow Country Park** .....30 - 31

Local activities ..... 32 - 33

OWN YOUR OWN HOLIDAY HOME ..... 34 - 39

FAQ's ..... 36 - 37

Choosing your holiday home ..... 38 - 39

# Stay at our Holiday Parks in Devon

Whether you're looking for a family holiday, somewhere quiet to relax, or romantic weekends away, Devon has something for everyone and is a popular holiday location owing to its glorious coastline, outstanding beauty and breathtaking countryside.

You'll find a cluster of seaside towns and villages that provide great scenery, and some of Britain's best surfing on blue flag beaches. Westward Ho! Beach is widely recognised as one of the safest beaches in the UK, with plenty of surf and two miles of golden sand.

Home to the South West Coast Path, Exmoor National Park, and Dartmoor National Park, we're surrounded by endless walking routes with breathtaking views.

Whatever your reason for visiting Devon, it's the perfect place to do the things you love with the people you love and the reason why so many visitors return year after year.

Beachside  
HOLIDAY PARK

Surf Bay  
HOLIDAY PARK





# Beachside HOLIDAY PARK

Holiday  
breaks

Westward Ho! Devon

Enjoy fantastic views of Westward Ho! Beach and the Atlantic from the comfort of your holiday home.

Full details on pages 6 - 11

[www.beachsideholidays.co.uk](http://www.beachsideholidays.co.uk)



# Surf Bay HOLIDAY PARK

Own  
your  
own

Holiday  
breaks

Westward Ho! Devon

The park boasts it's own access to Northam Country Park and Westward Ho! Beach which is just a few minutes' walk away.

Full details on pages 12 - 19

[www.surfbay.co.uk](http://www.surfbay.co.uk)

# Beachside HOLIDAY PARK

**Holiday  
breaks**

A stone's throw away from the family resort of Westward Ho!, Devon.  
*Whatever you choose to do when you stay with us, we're certain that you'll have a fantastic holiday and will want to come back and visit us time and time again*

Caravan holiday homes, pods and luxury apartments

-  4 star holiday park
-  Pet friendly
-  Free Wi-Fi
-  Sea views
-  Launderette
-  Hot tubs

Nestled right on the sea front in Westward Ho! Devon is our award winning, self catering Beachside Holiday Park.

With a range of 1, 2 and 3 bedroom static caravans, pods and luxury apartments available to hire with the option of hot tubs and pet friendly accommodation, Beachside is perfect for both couples and families.

Our 4 star holiday park slopes gently down to the glorious blue flag beach of Westward Ho! with vast areas of sand at low tide and fascinating rock pools for tiddler fishing. It is safe and clean for youngsters to play in and around the water and with the right sea conditions you'll get some fantastic surfing opportunities too. For those who enjoy fishing, you will be spoilt for choice with beach, rock and even Devon coarse fishing opportunities nearby.



# Stay in a Caravan Holiday Home

at Beachside Holiday Park



## Swan 37 Sleeps 4 - 6

- Main bedroom & Twin bedroom
- Double glazing
- Central heating
- TV & DVD player
- Bluetooth speaker
- Dishwasher
- Microwave
- En-suite with bath & overhead shower
- Shower room
- Fold out double bed in lounge
- Pillows, duvets & bed linen



## Swan 32 / Plus Sleeps 4 - 6

- Main bedroom & Twin bedroom
- Double glazing
- Central heating
- TV & DVD player
- Bluetooth speaker
- Microwave
- Shower room
- Fold out double bed in lounge
- Pillows, duvets & bed linen
- En-suite WC
- Decking & hot tub (Plus only)
- Access available via ramp on some accommodation
- Decking available on some standard Swan 32's



## Puffin / Plus Sleeps 4 - 6

- Main bedroom & Twin bedroom
- Double glazing
- Central heating
- TV & DVD player
- Bluetooth speaker
- Microwave
- Shower room
- Fold out double bed in lounge
- En-suite WC
- Pillows, duvets & bed linen
- Covered decking
- Hot tub (Plus only)



Images are representative and may vary.

All of our holiday homes are positioned to ensure they have the best possible view of the coastline



New for 2023

### Shearwater Deluxe

#### Shearwater Deluxe PF Sleeps 4 - 6



- Main bedroom & Twin bedroom
- Double glazing
- Central heating
- TV
- Microwave
- Shower room
- Fold out double bed in lounge
- Decking
- Pillows & duvets
- Bed linen available to hire
- Some pet friendly accommodation available



New for 2023

### Razorbill PF Sleeps 4 - 6



- Main bedroom & Twin bedroom
- Double glazing
- Central heating
- TV
- Microwave
- Shower room
- Fold out double bed in lounge
- Pillows & duvets
- Bed linen available to hire
- Pet friendly accommodation



New for 2023

### Guillemot Sleeps 2 - 4

- Main bedroom & Twin bedroom
- Double glazing
- Central heating
- TV
- Microwave
- Shower room
- Pillows & duvets
- Bed linen available to hire

### Sandpiper PF Sleeps 4



- Main bedroom & Twin bedroom
- Plinth heaters
- TV
- Microwave
- Shower room
- Pillows & duvets
- Bed linen is available to hire
- Pet friendly

### Heron Sleeps 6 - 8

- Main bedroom & 2 x Twin bedrooms
- Double glazing
- Central heating
- Bluetooth speaker
- TV & DVD player
- Microwave
- Separate WC
- Fold out double bed in lounge
- Shower room
- Pillows & duvets
- Bed linen is available to hire

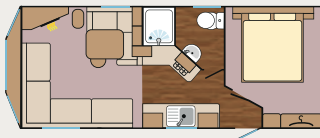






### Seagull / Seagull PF Sleeps 2 - 4

- Main bedroom
- Double glazing
- Central heating
- TV
- Microwave
- Shower room
- Fold out double bed in lounge
- Pillows & duvets
- Bed linen is available to hire
- Some pet friendly accommodation is available



### Albatross Wheelchair Accessible Sleeps 4 - 6

- Main bedroom with pull up hand rail
- Double glazing
- Central heating
- TV
- Microwave
- Handrails
- Wet room
- Fold out bed in lounge
- Bed linen included
- Pet friendly



### Curlew Plus Pods Sleeps 2 - 4

- Twin room in mezzanine
- Pull out double bed
- Central heating
- Double glazing
- TV & DVD Player
- Microwave
- Bluetooth speaker
- Shower room
- Pillows, duvets & bed linen
- Decking with hot tub



## Floorplans

Swan 37 Sleeps 4 - 6



Puffin / Plus Sleeps 4 - 6



Shearwater Deluxe Sleeps 4 - 6



Razorbill PF Sleeps 4 - 6



Swan 32 / Plus Sleeps 4 - 6



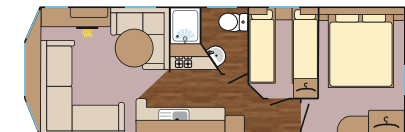
Guillemot Sleeps 2 - 4



Heron Sleeps 6 - 8



Sandpiper PF Sleeps 4



Floorplans are representative and may vary.

Contact us to check availability, and to book your Beachside Holiday 01237 421163

# Stay in our Luxury Apartments

Our stunning 2 and 3 bedroom apartments offer the best of the best and have been tastefully designed and furnished with everything you could possibly wish for and more.

## Waterfront PF & Waterside PF 2 bedrooms

- Main bedroom & Twin bedroom
- Double glazing
- Underfloor heating
- 42" Smart TV with Netflix
- 32" TV/DVD player in bedrooms
- Bluetooth speaker
- Jacuzzi bath
- Hair dryer
- Bed linen & towels
- En-suite shower room
- Complimentary toiletries
- Complimentary tea/coffee
- Dishwasher
- Microwave
- Coffee machine
- Balconies with fantastic sea views
- Pet friendly





Driftwood

### Driftwood & Sea Breeze 3 bedrooms

- Main bedroom & 2 x twin bedrooms
- Hot tub (on Driftwood only)
- Double glazing
- Underfloor heating
- 42" Smart TV with Netflix
- 32" TV/DVD player in bedrooms
- Bluetooth speaker
- Jacuzzi bath
- Hair dryer
- Bed linen & towels
- En-suite shower room
- Complimentary toiletries
- Complimentary tea/coffee
- Dishwasher
- Microwave
- Coffee machine
- Balconies with fantastic sea views

### More about the park

Facilities .....	16
Local dining .....	17
Local activities .....	18 - 19

Sea Breeze

# Surf Bay

## HOLIDAY PARK

Stay in our luxury apartments

-  4 star holiday park
-  Pet friendly
-  Wi-Fi packages
-  Hot tubs
-  Launderette
-  Beach access

Surf Bay is an award winning family holiday park with private access to 600 acres of Northam Country Park and the safe sandy beach of Westward Ho! which offers stunning views and beautiful sunsets. The beach provides some of the best water sports opportunities along the North Devon coast where surfing or body boarding are a must!

A short walk away is the village of Westward Ho! with shops, cafés, family friendly restaurants and bars. Take a stroll along the promenade or sit on the village green and enjoy a famous Hocking's ice cream.

Children will love the many family attractions within a short distance or enjoy a day-trip by boat to Lundy Island, see the seals and puffins in a place of outstanding beauty, or if you're not an adventure seeker, simply stretch out with a good book, catch some sun and relax.



Ask about owning  
your own holiday home at  
Surf Bay Holiday Park

Holiday  
breaks

Own  
your  
own

Open for  
11 months  
of the year



## Find out more

If you'd like more information about owning your own holiday home at Surf Bay Holiday Park please contact us.

Call: 01237 471833

Email: [sales@surfbayholidays.co.uk](mailto:sales@surfbayholidays.co.uk)

[www.surfbay.co.uk](http://www.surfbay.co.uk)

# Own Your Own Holiday Home

at Surf Bay Holiday Park



You can own your own holiday home on three of our holiday parks, Surf Bay Holiday Park, River Valley Country Park and Silverbow Country Park.

Whether you're looking for an unspoilt park by the sea in Devon, or a glorious retreat in Cornwall, we have a range of luxury static caravans and lodges for sale to suit everyone.

You can add any extra features that you require so that your holiday home is exactly as you want it.

**Caravan site fees** from £3,660

**Rates and water** - inclusive

**Electric** - metered and invoiced once a year

**Gas** - bottled and paid for as required

**Insurance** - renewable on 1<sup>st</sup> February every year

**Dogs permitted**

Own  
your  
own



# Stay in our Luxury Apartments

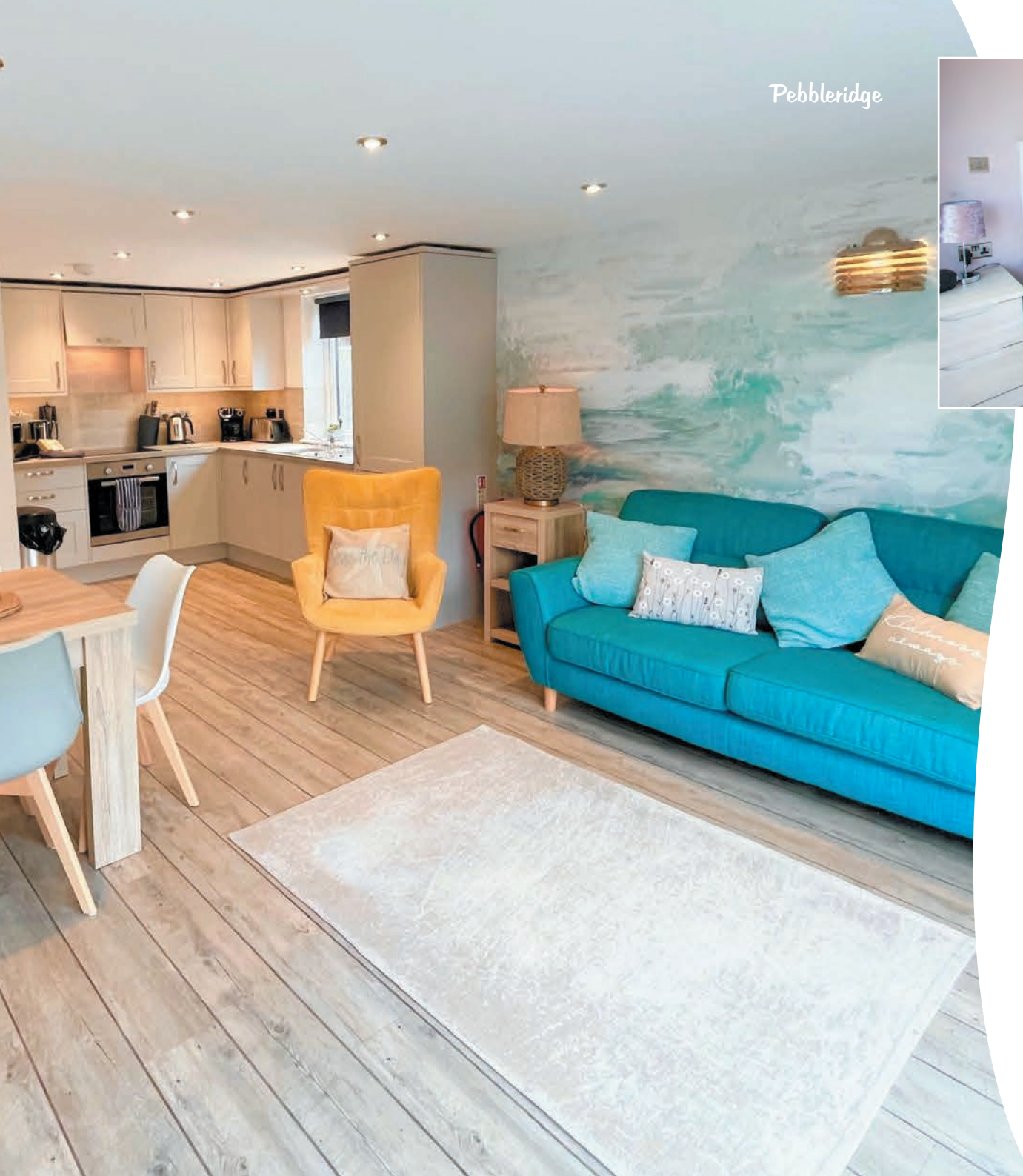
Our luxury holiday apartments cater for up to 6 people and offer a stress free, family holiday with some extra special comforts to help you relax.

## Pebbleridge PF & Sandymere 2 bedrooms

- Main bedroom & Twin bedroom
- Hot tub
- Double glazing
- Underfloor heating
- 42" Smart TV with Netflix
- Bluetooth speaker
- 32" TV/DVD player in bedrooms
- Jacuzzi bath
- En-suite shower room
- Hair dryer
- Bed linen & towels
- Complimentary toiletries
- Complimentary tea/coffee
- Dishwasher
- Microwave
- Coffee machine
- Balconies with fantastic views
- Pet friendly (Pebble Ridge only)



Pebbleridge



Pebbleridge

**Beachcomber PF & Breakwater PF 3 bedrooms**

- Main bedroom & 2 x twin bedrooms
- Hot tub (Breakwater only)
- Double glazing
- Underfloor heating
- 42" Smart TV with Netflix
- Bluetooth speaker
- 32" TV/DVD player in bedrooms
- Jacuzzi bath
- En-suite shower room
- Hair dryer
- Bed linen & towels
- Complimentary toiletries
- Complimentary tea/coffee
- Dishwasher
- Microwave
- Coffee machine
- Balconies with fantastic views
- Pet friendly



**More about the park**

Facilities .....	16
Local dining .....	17
Local activities .....	18 - 19

# Park Facilities



## Pet Friendly

We understand that sometimes a holiday isn't quite complete without your dog, which is why they are welcome in privately selected holiday caravans, lodges and apartments on our parks. There are plenty of beautiful beaches to explore nearby that allow dogs as well as Northam Burrows Country Park.



We are committed to giving exceptional customer service and are dedicated to providing the highest standards in all of our holiday homes.



## Hot Tub Holidays

What better way to relax after a day of exploring North Devon than a soak in a hot tub, available with pods, apartments and caravan holiday homes.



## Laundrette

Our Laundrette is open daily from 8.30am - 5.00pm. All of our machines are coin operated. Washing machines are £4 per wash. Tumble dryers are £1 per 15 minutes drying time.



## Free Wi-Fi

A complimentary Wi-Fi service is available to all of our guests during their stay with us. You can collect your free access code from reception on your arrival.

media and carry out web browsing to catch up on the news, weather forecasts or to find out more about local attractions. Please do not expect to be able to play games or use online video streaming services.

Due to our idyllic location, broadband speeds may not be as fast as you are used to at home. Essentially, our free Wi-Fi will allow you to send and receive e-mails, keep in touch via social

Our owners can upgrade to a faster dedicated Wi-Fi service to their caravan. Please contact Reception for further details.

Beachside  
HOLIDAY PARK

Surf Bay  
HOLIDAY PARK

★ Book a *Surf Bay Holiday*, for the perfect get-away

Find out more [www.surfbayholidays.co.uk](http://www.surfbayholidays.co.uk)





## Local Dining

If you're looking for great places to eat in North Devon then you certainly won't be disappointed. Whether it's fish and chips, Italian, Indian, freshly caught seafood, organic locally sourced produce or the famous Hocking's ice cream, you will certainly find something to tickle your tastebuds.

### **Country Cousins**

Traditional style restaurant just minutes from the beach. Popular with residents and holidaymakers. Dog friendly.

3 Westbourne Terrace, Westward Ho!,  
Devon EX39 1LL 01237 476989

---

### **The Drift**

A family run restaurant with a great menu which includes wood fired oven pizzas.

Golf Links Rd, Westward Ho!,  
Bideford EX39 1LH 01237 700444

---

### **The Waterfront Inn**

Recently refurbished modern bar and restaurant with food served inside and out. Pool table and TV screens, plus live entertainment. Parking available and dog friendly.

Golf Links Road, Westward Ho!,  
Devon EX39 1HL 01237 474737

### **Morans Thai Restaurant & Bar**

Morans is a restaurant and bar specialising in a mouth-watering range of Thai cuisine and cocktails.

Golf Links Rd, Westward Ho! EX39 1LH,  
01237 472070

---

### **The Pier House**

Open daily with seasonal entertainment for all the family to enjoy and ample free on-site parking.

Merley Road, Westward Ho!,  
Devon EX39 1JU 01237 477777

---

### **The Guillemot**

Under new management and offering a fantastic new menu, all whilst offering a fantastic sea front view that will take your breath away.

51 Bath Hotel Rd, Westward Ho!,  
Bideford EX39 1GW

These are just a few great options, please ask us for more information

# Where to Explore

North Devon boasts some of the best beaches in the UK. Our beaches provide you with plenty of opportunity for long walks on golden sands, surf for both beginners or advanced and of course, lots of family fun!

In North Devon, you'll be truly spoilt for choice with blue flag beaches such as Westward Ho!, Woolacombe and Saunton Sands as well as the famous Croyde beach. The beaches are linked together by the South West Coast Path which offers miles of breathtaking scenery along with plenty of pubs, cafés and restaurants where you can relax after a day in the sun.

## Clovelly

Clovelly is a beautiful harbour village steeped in plenty of maritime atmosphere and history. Walk down ancient cobbled streets, enjoy picturesque views and feel like you're in a completely different world.



## Lundy Island

Lundy Island is a fantastic day out for all the family. Boat trips on the MS Oldenburg run regularly to the island where you can see the famous Puffins as well as a host of other rare wildlife.



If you're looking for family fun then you won't be disappointed, The Big Sheep and The Milky Way theme park are only a few miles away and will provide hours of fun for all the family, come rain or shine.

## Royal North Devon Golf Course

This is the oldest links course in England. It was laid out on Northam Burrows in 1864. This course represents a true test of golf. A visit to the club is essential for all lovers of golf. The course has 18 holes and a Par 72.



## Westward Ho! Beach

Westward Ho! beach has 2 miles of golden sand. It is recognised for being one of the safest beaches in the country and has also been awarded the prestigious Blue Flag Award and Seaside Award for water quality, standard of facilities, beach management and general tidiness.

Beachside  
HOLIDAY PARK

Surf Bay  
HOLIDAY PARK

### Exmoor Zoo

Awarded Best Small Attraction in the South West, this contact orientated zoo is a special place that enables you to get up close and personal. You get to meet the animals, join in the handling sessions, touch a snake, hold a spider, feed a wallaby and learn about the animals during talks and feed times.



### 514 Elemental Kitesports School

A professional BKSA recognised kite sports school providing power kiting, kite surfing, kite land boarding and kite buggying lessons. Brought to you by two of the UK's top kite boarders.



### Skern Lodge Outdoor Activity Centre

Skern Lodge offers a range of outdoor activities, including surfing, body-boarding, an assault course, big zip wire, river kayaking, rafting, climbing, high ropes, abseiling and lots more.



### Follyfoot Equestrian Centre

Follyfoot is a riding and trekking centre located adjacent to Northam Country Park, which offers beautiful off road trekking. Westward Ho! is a 10 minute hack away and offers a 3 mile stretch of golden beach for a lovely hack or a nice steady canter.



### Ultimate Adventure Centre

The Ultimate Adventure Centre offers a range of outdoor activities with an ultimate twist. The most popular activity is the Ultimate Assault which is based on the assault course from the TV show Total Wipeout and was rated as one of the best activities in the UK by The Guardian.



### Bideford Bicycle Hire

Situated just a few miles from the beach in North Devon's Tarka country, Bideford Bicycle Hire is the perfect place to hire a bicycle to explore the traffic-free 34 mile Tarka Trail cycle route. There are cycles to suit all abilities from tandems, trailers, tag-a-longs and trikes, to mountain bikes, hybrids and a wheel chair tandem.

These are just a few great options, please ask us for more information

# Stay at our Holiday Parks in Cornwall

The unique culture, spectacular landscape and mild climate of Cornwall make it one of the UK's most popular holiday destinations.

Cornwall is well loved for many reasons. From its dramatic coastline and spectacular beaches to rolling moorlands, dotted with ancient standing stones and ruined tin mines. Nestled amongst the rugged cliffs and traditional fishing villages, the beautiful beaches with pounding waves create a natural playground for surfers and a variety of other water sports.

The illustrious local cuisine, including Cornish pasties and cream teas (jam first, then cream!) has been enriched with award winning food producers, Michelin Star restaurants and stellar chefs, putting Cornwall firmly on the gourmet map.

From Land's End to the Lizard to Tintagel, Cornwall's stunning coastal walks are famous for their wild beauty, whilst the enchanting fishing villages and harbours offer an insight into the history of the local area.

  
River Valley  
COUNTRY PARK

  
Silverbow  
COUNTRY PARK

20  Book a **Surf Bay Holiday**, for the perfect get-away



Visit Newlyn fish market for the catch of the day, or stop off in St Ives, home of numerous art galleries. With so much to see and do, it's easy to see why Cornwall is the perfect holiday destination.





## River Valley COUNTRY PARK

Relubbus, Penzance

Own  
your  
own

Holiday  
breaks

Luxury lodges situated in 23 acres of partly wooded park, situated along the banks of a clear, shallow stream.

Full details on pages 22 - 29

[www.rivervalley.co.uk](http://www.rivervalley.co.uk)



## Silverbow COUNTRY PARK

Goonhavern, Truro

Own  
your  
own

Enjoy peace and quiet, with spectacular views of the Cornish countryside, when you own your own holiday home at Silverbow - just 3 miles from the coast.

Full details on pages 30 - 33

[www.silverbow.co.uk](http://www.silverbow.co.uk)



# River Valley COUNTRY PARK

Holiday  
breaks

Own  
your  
own

Open for  
11 months  
of the year

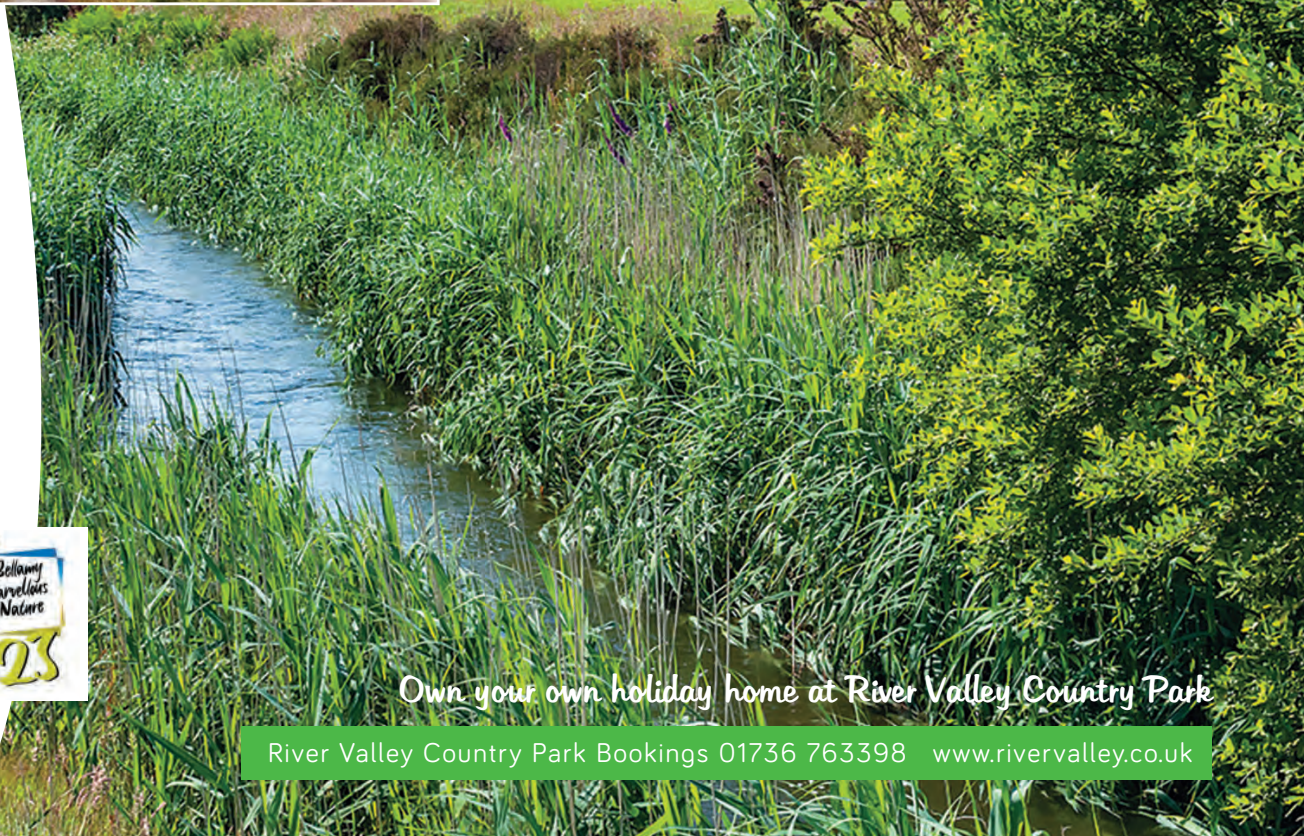
## Holiday homes and luxury lodges

-  4 star holiday park
-  Pet friendly
-  Wi-Fi packages
-  Hot tubs
-  Launderette

River Valley Country Park is an oasis of calm. Set within 23 acres of green Cornish countryside, it is the perfect location to forget the hustle and bustle of modern life.

Our partially wooded park is situated in a picturesque valley, only a short drive from St Michaels Mount and both north and south coasts, with their sandy beaches. The gentle flow of the stream invites you to relax whilst you take in the peaceful countryside environment, whilst nearby there are striking cliffs, granite moorlands, wooded valleys and spectacular wildlife.

The park has been awarded a prestigious David Bellamy Gold Award for nature conservation, a great reflection on the ethos of the park. Whether you are attracted by the peace and quiet, the nearby coastline or the bustling fishing harbours, you will want to return to River Valley time and again for stress free holidays throughout the year.



Own your own holiday home at River Valley Country Park



# Stay in our Holiday Lodges

at River Valley Country Park



Our beautiful three bedroom Larch Plus lodges can comfortably accommodate a family of six and offer a modern and stylish open plan living space, all your home comforts and extravagant luxuries.

There is also a private decked area where you can enjoy outdoor living and a hot tub which is situated in a delightful secluded location. No matter what you choose to do during your stay in these spectacular lodges, you'll be doing it in style!



## Larch Lodge Plus Sleeps 6

- Main bedroom & 2 Twin bedrooms
- Double glazing
- Central heating
- TV & DVD player
- Bluetooth speaker
- Microwave
- Dishwasher
- Bathroom with bath & overhead shower
- En-suite shower room
- Pillows, duvets & bed linen
- Hot tub
- Decking



## Cedar Lodge Plus Sleeps 4

- Main bedroom & Twin bedroom
- Double glazing
- Central heating
- TV & DVD player
- Bluetooth speaker
- Dishwasher
- Microwave
- Wine cooler
- En-suite with bath & overhead shower
- Shower room
- Pillows & duvets with bed linen
- Hot tub
- Decking



Images are representative and may vary.

Some of our caravan holiday homes are dog friendly, please ask for more information 23



### Oak Lodge PF Sleeps 6

- Main bedroom & 2 Twin bedrooms
- Double glazing
- Central heating
- TV & DVD player
- Bluetooth speaker
- Dishwasher
- Microwave
- Bathroom with bath & overhead shower
- Pillows & duvets with bed linen
- Decking
- Pet friendly units available



### Maple Lodge / Plus Sleeps 4

- Main bedroom & Twin bedroom
- Double glazing
- Central heating
- TV & DVD player
- Bluetooth speaker
- Dishwasher
- Microwave
- Bathroom with bath & overhead shower
- En-suite shower room
- Pillows & duvets with bed linen
- Hot tub (Plus only)
- Decking
- Some pet friendly units available



# Thinking of owning your own Holiday Home?

You can own-your-own holiday home on three of our holiday parks, Surf Bay Holiday Park, River Valley Country Park and Silverbow Country Park.

Whether you're looking for an unspoilt park by the sea, or a glorious retreat in Cornwall, we have a range of luxury static caravans and lodges for sale to suit everyone.

**Caravan site fees** from £3,720

For full details, and to arrange a visit to view any of the holiday homes for sale on our parks please contact us. Call: 01837 680212  
Email: [sales@surfbayholidays.co.uk](mailto:sales@surfbayholidays.co.uk)

Own your own





## Find out more

If you'd like more information about owning your own holiday home at River Valley Country Park

Call: 01736 763398

Email: [sales@surfbayholidays.co.uk](mailto:sales@surfbayholidays.co.uk)

[www.rivervalley.co.uk](http://www.rivervalley.co.uk)

# Own Your Own Holiday Home

at River Valley Country Park



You can own your own holiday home on three of our holiday parks, Surf Bay Holiday Park, River Valley Country Park and Silverbow Country Park.

Enjoy the luxury of being able to holiday as many times as you like during the holiday season in one of the most beautiful parts of the country.

You can add any extra features that you require so that your holiday home is exactly as you want it.

**Caravan site fees** from £3,720

**Lodge site fees** from £4,910

**Rates and water** - inclusive

**Electric and gas** - metered and invoiced once a year

**Insurance** - renewable on 1<sup>st</sup> February every year

**Dogs permitted**

Own  
your  
own

# Stay in our Luxury Retreat



Self Catering Holiday Accommodation

- Free Wi-Fi
- Hot tub
- Games Room
- Pet friendly
- BBQ Lodge
- Play area

## Riverside Retreat 6 bedrooms Sleeps 12

Nestled in West Cornwall in the sleepy village of Relubbus, just a few miles from St. Ives, Hayle and Penzance is our spectacular Riverside Retreat, ideal for larger families or groups of friends.

This tastefully decorated six bedroom holiday home can comfortably accommodate up to 12 people and has a fantastic garden complete with play area and large lawn area that is suitable for ball games.

If you want to escape the elements then the BBQ Hunters Lodge is a great place for entertaining. This quirky lodge has a BBQ in the centre of the room and plenty of seating around the edge. Pretty lights, faux fur blankets, rugs and cushions help to create a lovely, warm ambience.

The main show stopper in this garden is the hot tub gazebo. Hours of fun can be had come rain or shine in this purpose built timber gazebo. Soak away your troubles in the hot tub whilst watching your favourite shows on the Smart TV or enjoy a glass of something special from the comfort of the corner sofa. Hot tub towels, robes and slippers are provided for all of our guests.

Luxury Cornish Retreats, Relubbus, Cornwall TR20 9ER

Holiday  
breaks

Open for  
12 months  
of the year

Luxury  
Cornish  
RETREATS





Enjoy your holiday with friends and family when you stay at our beautiful Riverside Retreat in West Cornwall



# Park Facilities



## Pet Friendly

Although your dog will need to be kept on a lead whilst on the park itself, we do have a dedicated dog walking field and there are a wide choice of local walks where you can exercise your dog. Several local attractions and pubs also welcome dogs which means your dog can join you whenever you want to enjoy a family day out.



Book a **Surf Bay Holiday**, for the perfect get-away

Own  
your  
own



## Hot Tub Holidays

For an extra bit of extravagance whilst on your holidays relax in tranquil settings, sit back, unwind and soak all your cares away amongst the bubbles in one of our hot tubs at River Valley Country Park and Riverside Retreat. Our hot tubs vary in size, style and colour. They can be used whatever time of the year you book.



## Launderette

Our Launderette is open daily from 9am - 9pm. Washing machines take laundry tokens which are £4.50 and can be purchased from Reception, tumble dryers are £1 for 10 minutes. Clothes lines are positioned behind the launderette.



## Free Wi-Fi

A free Wi-Fi service is available to all guests, however due to our rural location, broadband speeds may not be as fast as you are used to at home. You can use our free Wi-Fi to keep in touch with your friends, search the web for some fantastic places to visit in Cornwall or share some images you've captured of our beautiful park and its surroundings.

It's also great for checking out the latest surf conditions, finding out the weather forecast or to find the best routes to local beaches. Please do not expect to be able to play games or use online video streaming services.



## Local Dining

If you're looking for great places to eat close to River Valley then you certainly won't be disappointed. Whether it's fish and chips, Italian, Indian, freshly caught seafood, organic locally sourced produce or the famous Hocking's ice cream, you will certainly find something to tickle your tastebuds.

### **The Crown**

Home cooked food using the finest local ingredients from Wednesday through to Sundays. Dog friendly.

Fore St, Goldsithney,  
Penzance TR20 9LG

---

### **St Aubyn Arms Cornish Steak & Ale House**

Fantastic local Cornish produce.

The Square Praze-an-Beeble  
Camborne TR14 0JR

---

### **The Victoria Inn**

Reported to be the oldest recorded Inn in Cornwall. Excellent reputation for award-winning food using local produce, fine wines and ales. Dog friendly.

Perranuthnoe, Nr Penzance, TR20 9NP

### **The Godolphin Arms**

A contemporary beachside restaurant located opposite the iconic tidal island of St Michael's Mount., serving locally sourced food. Dog friendly.

Marazion TR17 0EN

---

### **The Star Inn**

A huge welcome awaits you at this 17<sup>th</sup> century traditional village pub, along with great food and drink. It is child, bike, dog and welly friendly.

1 Church Street, St. Erth, Hayle, TR27 6HP

---

### **The Packet Inn Smokehouse**

Where flavour takes centre-stage. The best Cornish produce is sourced, from coast and countryside, cooking elements over coals and wood to give food a unique edge.

Packet Ln, Rosudgeon, Penzance TR20 9QE

These are just a few great options, find more on our website [www.rivervalley.co.uk](http://www.rivervalley.co.uk)

# Silverbow COUNTRY PARK

Own your own caravan holiday home

-  Wi-Fi packages
-  Pet friendly
-  Launderette

Silverbow Country Park is our latest holiday park development, with luxury lodges and static caravans for sale near Goonhavern in North Cornwall.

The peaceful 26 acre country park is located just three miles from the stunning beach of Perranporth on the North West Cornish coast, with great transport connections. The park is quiet, relaxed and surrounded by nature - adorned with trees, shrubs and ponds - a great location for families looking for a relaxing holiday with easy access to fabulous beaches and fantastic walks.

Truro and Newquay are just a short drive away, offering a range of tourist attractions. You can visit nearby beaches of Fistral, Crantock and Holywell Bay for a great family day out, with scenery that epitomises the North Cornwall coast.

Perranporth offers a stunning stretch of beach, a great walk at low tide and is one of the best surfing beaches in the country.



Exclusive  
owners  
only park

Open for  
11 months  
of the year





*Our owners can handpick their own static caravan or lodge from a wide selection of holiday homes from some of the UK's leading manufacturers ABI, Atlas and Swift.*

Owning a holiday home at Silverbow will provide you with a base that gives you access to all that Cornwall has to offer including beautiful beaches, water sports, quaint villages and miles of picturesque walks.

The park is open for 11 months of the year including the Christmas and New Year period, so you can enjoy plenty of holidays throughout the season.

You can also add any extra features that you require so that your holiday home is exactly as you want it.

- Caravan site fees from £4,880
- Lodge site fees £5,980
- Rates & Water - inclusive
- Electric & Gas - metered and invoiced once a year
- Insurance - renewable on 1<sup>st</sup> February every year
- Dogs permitted

### Ask us about owning your own holiday home at Silverbow Country Park



#### Find out more

If you'd like more information about owning your own holiday home at Silverbow Country Park please ask us about availability. You can also read more on pages 34 - 39.

Call: 01872 572347  
Email: [sales@surfbayholidays.co.uk](mailto:sales@surfbayholidays.co.uk)  
[www.silverbow.co.uk](http://www.silverbow.co.uk)

Own your own



# Where to Explore

Cornwall boasts some of the best beaches in the UK. They provide plenty of opportunity for long walks on golden sands, surf for both beginners and advanced and of course lots of family fun! The beaches provide the perfect playground for a whole host of water sports so you are certain to find a beach that suits you.

Perranuthnoe Beach is located on the south coast around a mile to the east of Marazion, with fine views of Cornwall's jewel, St Michael's Mount. At low tide Perranuthnoe is a sandy beach with some shingle and at high tide the beach is mostly claimed by the sea.

Carbis Bay Beach is one of Cornwall's award winning blue flag beaches which is ideal for families as there is rarely any surf and therefore perfect for swimming.

Porthminster Beach is located just a short walk from St. Ives, this blue flag beach is another family favourite for safe swimming.

Porthmeor Beach is a safe, sandy beach popular with surfers and swimmers alike in an ideal location just a stone's throw from the centre of St Ives.

Porthcurno Beach is popular with families and has a stream that flows down one side, which is great for kids to paddle in.



## St Michael's Mount

The National Trust's St Michael's Mount is a rocky island crowned by a medieval church and castle. This tidal Island is the most famous of Cornwall's landmarks, complete with majestic gardens and stunning panoramic views across Mounts Bay to Land's End and The Lizard. The Mount is a complete family day out, with quite literally something for everyone.



## Tate St. Ives

The iconic Tate St. Ives is an art gallery in St. Ives that combines inspiring art and breath-taking scenery. The gallery showcases some of the best-loved British artworks of the 20<sup>th</sup> Century alongside an ever changing programme of exhibitions.



## Land's End Cycle Hire

Provides cycle hire in Cornwall for all ages and abilities; including hybrids, electric bikes, road bikes, mountain bikes, tandems, trailers, kids seats and tag-alongs. Bikes can be delivered with 24 hours notice.





### Cornish Seal Sanctuary

Hear about dramatic rescues and meet the seal and sea lion characters whose individual stories are brought to life during your visit. The Sanctuary is also home to fun loving otters, playful penguins and potty paddock animals. This 42 acre centre also boasts a woodland quiz trail, café with undercover seating and two gift shops. Discounted tickets are available to purchase from Reception.



### Paradise Park Wildlife Sanctuary

Meet wonderful wildlife and enjoy the indoor play. You'll see over 130 species of colourful birds including parrots, Humboldt's penguins, Caribbean flamingo, Red-billed Cornish choughs and Eagles, plus many other animal species and farm animals.



### Pet friendly

Cornwall is a great location for a dog friendly holiday with a plethora of walks right on your doorstep including the fantastic South West Coastal Path where you can enjoy stunning views that change on every corner. There are 137 beaches in Cornwall where dogs are allowed unrestricted.



### Flambards Theme Park

Flambards is a great family fun day out with plenty of great things to do! Brave the sky-high thrill rides, or enjoy the undercover soft play area. Discover dinosaurs in the Jurassic Journey and uncover fossils in the Dino Dig. Step back in time in the life-size Victorian Village and experience Britain in the Blitz in the award-winning Indoor Attractions.



### Cornwall Swimming Horses

The Peep Out Training yard, offers unique and bespoke horse experiences. The iconic and stunning St Michael's Mount makes a beautiful backdrop to swim in the sea at high tide and have exhilarating beach rides for experienced riders at low tide.



### Global Boarders Surf School (Praa Sands)

Global Boarders delivers professional surf tuition to tourists and locals alike all-year-round. This 'Centre of Excellence' caters for all ages and abilities, so whether you're a seasoned surfer looking for tips or a group of total beginners hoping to catch some waves there is something to suit everyone.

These are just a few great options, find more on our website [www.rivervalley.co.uk](http://www.rivervalley.co.uk)



Own  
your  
own

Open for  
11 months  
of the year

## Thinking of owning your own Holiday Home?

Surf Bay Holidays provide exclusive developments of luxury lodges and static caravan holiday homes on our family run parks in Devon and Cornwall. Whether you're looking for an unspoilt park by the sea, or a glorious retreat in Cornwall, we have a range of luxury static caravans and lodges for sale to suit everyone.

Choose your park and find your dream holiday home with everything just as you want it to be - you can even choose your own fixtures and fittings! You can also earn extra income by subletting your caravan to suit you and help to pay for fees and utilities throughout the year.

Become a local and find the finest restaurants and pubs, search out the quiet coves, unspoilt beaches and the best days out, and have the flexibility to holiday with your family and friends whenever you like during the season.

You can own-your-own holiday home on three of our holiday parks. Surf Bay Holiday Park, River Valley Country Park and Silverbow Country Park. Our parks are maintained to the highest standards making them the ideal place to own your own holiday caravan or lodge for both couples and families alike.



For full details, and to arrange a visit to view any of the holiday homes for sale on our parks please contact us. Call 01872 572347 Email [sales@surfbayholidays.co.uk](mailto:sales@surfbayholidays.co.uk)



# Our guide to buying a holiday home or lodge

## Choosing your park

Some of the first steps in deciding which park is perfect for you is considering what facilities you will require and the travel time from your home.

Are you looking for somewhere with access to the beach, or do you prefer being nestled in the countryside? What journey are you comfortable with making every time you want to use your holiday home?

We recommend that you visit each park that meets your requirements to have a good look around and get a good feel for your preference.

## Choosing your pitch

Once you have chosen your ideal park it's time to decide on your caravan holiday home or lodge.

Visit each holiday home, or vacant pitch available to sample the surroundings, and take in those all important views.

We recognise that this is an important investment and a big decision for anyone to make and that's why we offer impartial advice and guidance to ensure that you find the perfect holiday home.

At this stage there are a number of questions to bear in mind:

- ? Who will be using the holiday home?
- ? What size will you need?
- ? How many bedrooms will you require?
- ? Are there any essential features that you will require such as an en-suite bathroom, free standing furniture, double glazing or central heating?
- ? Where do the windows need to be for you to take advantage of that fantastic view?

If you choose a vacant pitch you might want to visit the holiday home sales showground at Surf Bay Leisure where you'll find a wide range of holiday homes on display. You can visit their Sales Centres in Winkleigh, Brean and Bridport.

## How to buy

Now that you have chosen your park and chosen your perfect holiday home, you are ready to discuss a total price (including siting, connection and delivery) with Surf Bay Holidays who can then place your order.

All payments for your order will be made direct to the park who will also arrange delivery, siting and connection for you.

As soon as this is complete, that's it! Your fully furnished holiday home will be ready for you to move into so you're able to escape from it all, to a place you love for many years to come.

## Ownership information

11 month season. Holiday caravans and lodges are restricted to holiday home use only and you may only use your holiday caravan or lodge during the dates stipulated on your contract. All of our owners must have a residential address, either in the UK or overseas.

Pets are welcome in private holiday homes on our parks, but must be kept on leads.

# FAQ's when buying a holiday home or lodge at Surf Bay Holidays



Q. What do I get for my money?

A. As well as your caravan holiday home or lodge, the price also includes:

- Transportation, siting and levelling of unit on your chosen plot
- Securing and chaining down on the unit
- Connection to electric supply, water supply and foul water system
- Supply and fitting of two gas bottles and regulator or connection of unit to piped gas supplied underground
- Supply and fitting of exterior TV aerial
- Supply and fitting of steps to front and rear doors including hand rails
- Fire extinguisher/smoke alarm
- Pre-delivery inspection and check
- Decking on lodges and caravan holiday homes at River Valley Country Park

Unless otherwise stated, the price does not include annual pitch fees.

Q. How much are my pitch fees?

A. The annual Pitch fees may vary according to the pitch size and park and are payable in advance and are due on or before 31<sup>st</sup> January. Prices quoted are inclusive of VAT. Payment requests are sent out early in the New Year.

Q. Can I live on the parks?

A. Our parks are licensed for holiday use only, making them NON-RESIDENTIAL. You will be asked to provide evidence of a permanent address. When the park is closed, you will not be able to use your holiday home during this time.

Q. When can I use my holiday home?

A. You can use your caravan or lodge whenever the park is open. Surf Bay Holiday Park, River Valley Country Park and Silverbow Country Park all have an 11 month licence (February - January).

Q. What is the tenure and how long does it last?

A. The license agreement, under the Code of Practice drawn up by the British Holiday & Home Parks Association in consultation with the Office of Fair Trading is issued as standard to owners of caravan holiday homes and lodges on holiday parks. This maintains the high standards expected today and ensures you have the security of tenure recognised by the Government and all interested authorities. On purchasing a new caravan on our parks, you will be issued with a 12 or 15 year holiday licence agreement from the date of purchase. For pre-owned caravans and lodges, the licence agreement will run for the remaining balance. On purchasing a lodge at River Valley Country Park you will be issued with a 30 year holiday licence agreement. All dates are explained and agreed when your sale is completed.

Q. How long will the caravans and lodges last?

A. All caravan holiday homes are built to NCC standard EN1647 and are built from materials that will withstand the duration of the licence period. On timber units regular

exterior maintenance and treatment will prolong the life of the unit.

Q. When will I have to change my holiday caravan or lodge again?

A. At the end of your holiday agreement licence.

Q. Who is responsible for maintenance?

A. It is in your own interest to maintain your purchase. We will be pleased to help organise any repairs and maintenance to your caravan or lodge on your behalf, or to put forward the names of local trades people. To ensure that all of our parks remain attractive holiday destinations, all privately owned accommodation must be kept in a good state of repair and condition.

Q. How do I request a specific plot?

A. Plots on new developments and newly available pitches will be allocated on a strictly first come, first served basis, and can be reserved for £500.00. It is important to reserve the plot of your choice as early as possible. Book an appointment to arrange a park visit of your choice.

Q. Do I have to pay council tax?

A. No. You cannot live on our holiday parks, so council tax is not payable. However, the annual pitch fees include a contribution towards the local authority business rates levied on the park.



Q. Do I have to pay insurance?

A. Yes. You must be properly insured against all the usual risks including fire, flood, storm and third party liability. Please contact your parks Reception for further details.

Q. How much is gas, water and electric and how/who do I pay?

A. Water/sewage disposal are included within the pitch fees. Electric services are metered and you will be invoiced from the park office annually or at regular intervals if preferred. At Surf Bay Holiday Park, gas cylinders are charged for periodically in arrears. Prices include delivery and fitting. At River Valley Country Park and Silverbow Country Park, gas is piped and will therefore be charged for periodically.

Q. Do I pay for siting and connection of the caravan or lodge?

A. No, this price is built into the price you pay for your caravan or lodge. This service is provided by our siting team and park maintenance manager.

Q. Can I bring my dog?

A. Owners of their own caravans or lodges are able to bring their dogs with them to the parks, however they must be kept on a lead at all times, unless in a designated 'Dog Walk' area.

Q. Can my friends and family visit me?

A. Yes, however in the interest of park security, all owners and their visitors are asked to sign in at Reception or on the Sign In app on their arrival and to sign out on their departure. Owners who let their holiday homes must notify the park of arrivals.

Q. Are there any park rules?

A. Yes. Our holidaymakers and private owners enjoy a quieter, relaxed lifestyle on all of our parks. A set of park rules for each park are available and must be adhered to and form part of the licence agreement, which must be signed.

Q. Who looks after the caravan or lodge when the park is closed?

A. There will always be someone to keep an eye on your purchase when you are not there. This means that if there are any problems that are apparent from the outside, we can

inform you immediately and discuss an appropriate course of action. We will hold a key for use in such emergencies. It is policy on all our parks to ensure we are aware of all holidaymakers or visitors to privately owned accommodation.

Q. How much is a caravan or lodge?

A. The price you pay will depend on the size, specification and manufacturer you choose.

Q. How can I pay for my holiday caravan or lodge?

A. Many customers use their own savings or a bank loan to pay for their new or pre-owned holiday caravan or lodge. Many finance providers are available.

Q. Can I sublet my caravan or lodge?

A. Yes, we are happy for you to sublet your caravan or lodge. However, we reserve the right to terminate this privilege should your tenants continuously break our park rules. We strongly recommend you set your charges for sub-letting at a level that will help you to attract appropriate clients who will respect your holiday home, fit in with other

holiday makers and maintain the parks ambience. In the event that your caravan or lodge is sublet, you must be able to provide the appropriate Gas and Electrical Test Landlord Certificates. Owners who let their caravans must notify the park of arrivals.

Q. Can I have decking?

A. Due to health and safety regulations it may not be possible to offer you this option on some of our more developed locations, due to the distance between caravan holiday homes. However, where possible we will endeavour to provide this option at an additional charge. Charges will depend on decking type and size. Decking on lodges at River Valley Country Park is included in the price.

## Ask us about owning your own holiday home at a Surf Bay Holidays Park

For full details or to arrange a visit to view any of our holiday homes for sale on our parks, please email [sales@surfbayholidays.co.uk](mailto:sales@surfbayholidays.co.uk) or contact your chosen park direct.  
Surf Bay Holiday Park - 01237 471833  
River Valley Country Park - 01736 763398  
Silverbow Country Park - 01872 572347



Brand  
new  
models

# Choosing a brand new holiday home for your vacant pitch

Following the selection of a vacant pitch at one of our parks our owners can handpick their own static caravan or lodge.

You can visit Surf Bay Leisure to choose from a wide selection of holiday homes from some of the UK's leading manufacturers ABI, Atlas and Swift.



We have the largest display of holiday caravans and lodges in the South West



Surf Bay Leisure is the largest distributor of static caravans and lodges to holiday parks in South West England, covering Cornwall, Devon, Somerset, Dorset and Hampshire.

With hundreds of holiday home models on display from leading manufacturers ABI, Atlas and Swift across three sales centres you'll be spoilt for choice.

Visit Surf Bay Leisure to take a look inside some of the latest holiday home models.

Start your search here!

**SURF BAY**  
LEISURE

New & pre-owned holiday caravans & lodges

[www.surfbayleisure.co.uk](http://www.surfbayleisure.co.uk)



## Contact us

**Surf Bay Leisure - Devon**  
The South West Caravan Centre,  
The Airfield, Winkleigh, Devon  
EX19 8DW  
T: 01837 680100  
E: [info@surfbay.co.uk](mailto:info@surfbay.co.uk)

**Surf Bay Leisure - Dorset**  
St Andrews Industrial Estate,  
Shoe Lane, Bridport, Dorset  
DT6 3EX  
T: 01308 427444  
E: [bridport.sales@surfbay.co.uk](mailto:bridport.sales@surfbay.co.uk)

**Surf Bay Leisure - Somerset**  
Warren Road, Brean, Somerset  
TA8 2RP  
T: 01278 751171  
E: [brean.sales@surfbay.co.uk](mailto:brean.sales@surfbay.co.uk)

# Surf Bay HOLIDAYS

## Beachside HOLIDAY PARK

**Beachside Holiday Park**  
T: 01237 421163  
E: beachside@surfbay.co.uk

FIND US AT  
Merley Road,  
Westward Ho!,  
Devon,  
EX39 1JX  
[www.beachsideholidays.co.uk](http://www.beachsideholidays.co.uk)

Holiday  
breaks

## Surf Bay HOLIDAY PARK

**Surf Bay Holiday Park**  
T: 01237 471833  
E: surfbay@surfbay.co.uk

FIND US AT  
Golf Links Road,  
Westward Ho!,  
Devon,  
EX39 1HD  
[www.surfbay.co.uk](http://www.surfbay.co.uk)

Own  
your  
own

Holiday  
breaks

## River Valley COUNTRY PARK

**River Valley Country Park**  
T: 01736 763398  
E: rivervalley@surfbay.co.uk

FIND US AT  
Relubbus,  
Penzance,  
Cornwall,  
TR20 9ER  
[www.rivervalley.co.uk](http://www.rivervalley.co.uk)

Own  
your  
own

Holiday  
breaks

## Silverbow COUNTRY PARK

**Silverbow Country Park**  
T: 01872 572347  
E: silverbow@surfbay.co.uk

FIND US AT  
Perranwell Rd,  
Goonhavern,  
Truro,  
TR4 9NX  
[www.silverbow.co.uk](http://www.silverbow.co.uk)

Own  
your  
own

## luxury Cornish RETREATS

**Luxury Cornish Retreats**  
T: 01736 763398  
E: rivervalley@surfbay.co.uk

FIND US AT  
Relubbus,  
Penzance,  
Cornwall,  
TR20 9ER  
[www.luxurycornishretreats.co.uk](http://www.luxurycornishretreats.co.uk)

Holiday  
breaks

Find out more about owning your own holiday home at [www.surfbayholidays.co.uk](http://www.surfbayholidays.co.uk)